

AMPJACK® PROJECT PROFILE



Client name: Southern California Edison

Location: Various locations in California

Project name: 230kV & 500kV Single circuit & Double circuit transmission line rating remediation program (TLRR)

Scope of work: multiple tower raises for transmission line uprating

Role: Prime / Engineering design / Material Procurement / AMPJACK® System tower raises

Time frame: 2017 and ongoing



Project Details

Ampjack America Ltd. has completed various 230kV and 500kV single and double circuit transmission lines upgrade projects in support of Southern California Edison (SCE) Transmission Line Rating Remediation program (TLRR), ongoing involvement since 2017. Ampjack involvement in SCE's TLRR program includes detailed transmission line design, structural and civil design, condition assessment, material procurement, construction methodology development, and construction execution. Project have included more than twenty-five unique transmission lines and forty structure types. The primary objectives of the TLRR program is to bring the SCE system across the service territory into compliance with updated line clearance standards and nationwide circuit rating requirements. The program has been a success due the ability of the utility to reduce outage requirements, and reduce environmental impact through the implementation of the compact design of the AMPJACK® solutions. Projects are ongoing and currently scheduled to 2025. Project budget has been approximately \$20Million/Year.

AMPJACK® PROJECT PROFILE



Project have included more than twenty-five unique transmission lines and forty structure types. The primary objectives of SCE's TLRR program is to bring the SCE system across the service territory into compliance with updated line clearance standards and nationwide circuit rating requirements. The program has been a success due the ability of the utility to reduce outage requirements and environmental impact through the implementation of the compact design of the AMPJACK® solutions.

Ampjack performs numerous construction activities in regions that have stringent access and environmental requirements such as agricultural, forest, biological and cultural resource concerns. Sensitive locations such as the Angeles National Forest, Sierra National Forrest, Mojave National Preserve and the Bureau of Land Management (BLM) are all areas that Ampjack has completed projects without a single non-compliance. Many of the TLRR projects have included tower lifts, upgrades and repairs on various types of right-of-ways including;

- CalTrans Crossings:
 - Santa Clarita CA, California Interstate 5 Crossing
 - Palmdale CA, California HWY14 Crossing
 - Bakersfield CA, California HWY58 Crossing

- City of LA Canada-Flintridge
 - Descanso Dr. Descanso Gardens

- Union Pacific Rail Road (UPRR)
 - Mojave Desert, CA
 - Palmdale, CA

- Electrical Utility-Transmission and Distribution Crossings
 - Western Area Power Authority (WAPA) / Los Angeles Department of Water and Power (LADWP) / Pacific Gas & Electric (PG&E) / Southern California Edison (SCE)
 - Various locations Southern California including the City of Los Angeles

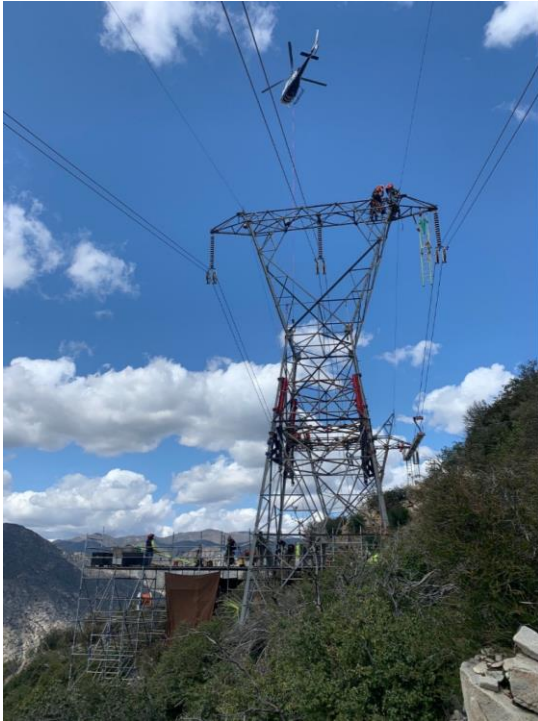
Southern Cal Edison contact:

Nora Harris: nora.harris@sce.com

Ampjack America contact:

Chris Stasiuk: cstasiuk@ampjack.ca

AMPJACK® PROJECT PROFILE



Southern Cal Edison contact:

Nora Harris: nora.harris@sce.com

Ampjack America contact:

Chris Stasiuk: cstasiuk@ampjack.ca